

**Ultra-Affordable,  
Very Portable.**



**BR-864**  
8-TRACK DIGITAL STUDIO


The BR-864 puts 8-track digital recording in BOSS' most portable package ever, without skimping on features. Inside you'll find 64 Virtual Tracks, killer COSM® effects and the world's easiest user interface. But this affordable 8-track also has a new Rhythm Guide with programmable patterns, .WAV/AIFF compatibility, USB and more.

## Recording Made Simple.

**1 Grab a guitar.**  
Connect a guitar to the Guitar/Bass input and set Input Select to "Guitar".




**2 Select an effect.**  
Press the Effect button and the BR-864 will automatically select a guitar effect. Use this one or select another Patch as desired.



**3 Arm the track.**  
Press the Status button of the destination track so it lights red.



**4 Start recording.**  
Press REC and PLAY to begin recording.




### Get Killer Tone with COSM

Plug into the BR-864 direct and get the tone you want with COSM Amp Modeling. Or lay down bass tracks using the Bass Simulator. The BR-864 also comes with new effects like pedal wah\*, guitar synth and a scale-intelligent Harmonist. \*Optional expression pedal required.

#### ●COSM Preamp Type

GUITAR								BASS
JC-120	CRUNCH	VO DRV	BG LEAD	MS(2)	SLDN	METAL D		AC
CLEAN	MATCH	BLUES	MS(1)	MS(1+2)	METAL			AMG

#### ●COSM Comp/Limiter Type

BOSS-Cmp	D-Cmp	Rack160	VtgRack
----------	-------	---------	---------



### A Mastering House Built-In

Wanna make a CD? Try running your stereo mixdown through the BR-864's Mastering Tool Kit. This special multi-effect includes multi-band compression, parametric EQ, a limiter, enhancer and more to give your tracks extra loudness and punch.



### Open-Ended USB Interface

Thanks to USB, the BR-864 opens your recordings up to the world of computers and the Internet. With a single-cable connection, you can easily import .WAV/AIFF files or export your songs to a Mac or PC for CD-burning and data backup.



### Batteries Included

The BR-864 can run on AC or battery power, which means you can now make professional-quality recordings any time, any place. BOSS even includes the batteries!



### Convenient Built-in Mic

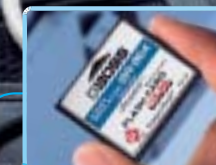
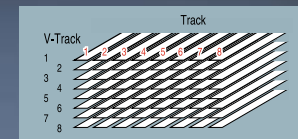
BOSS thought of everything! The BR-864's built-in microphone is perfect for times when bringing a mic and cable along isn't practical.



### 64 Virtual Tracks and 8-Track Playback

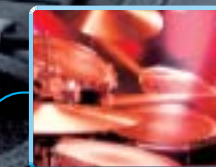
With 64 Virtual Tracks, there's plenty of room to "comp" the perfect vocal take or try alternate guitar solos. Then just choose any eight tracks for playback and mixdown. The BR-864 also adds new Track EQ, leaving the internal effects free for things like amp modeling and delay.

#### ●BR-864 Track Configuration



### More Recording Time with CompactFlash

Record over an hour's worth of tracks using the included 128MB CompactFlash card. These are the same storage cards used by modern digital cameras, so they're easy to get.



### New Programmable Rhythm Guide

The new Rhythm Guide offers a variety of realistic-sounding drum patterns, plus full programmability. New sounds can be imported using the Tone Load function.

#### Make Your Own Beats

The Rhythm Guide is fully programmable, so you can create your own rhythm patterns using the following features.

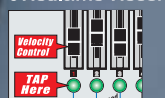
##### ●Tone Load

You can create new drum kits by loading your favorite drum sounds from a track, or by importing .WAV/AIFF files (up to 13 seconds of audio per drum kit).

##### ●Step Recording



##### ●Realtime Recording



\*The Track Status buttons change into Drum pads!



# 8-Track Power, 4-Track Size.

# BR-864

8-TRACK DIGITAL STUDIO  
COSM USB

## INSERT EFFECTS

<b>ASIM</b>	Acoustic Guitar Simulator	<b>DEF</b>	Defretter	<b>GSYN</b>	Guitar Synth	<b>PAMP</b>	Preamp
<b>ACP</b>	Acoustic Processor	<b>DLY</b>	Delay	<b>HRM</b>	Harmonist	<b>RNG</b>	Ring Modulator
<b>BSIM</b>	Bass Simulator	<b>DBL</b>	Doubling	<b>LO-FI</b>	Lo-Fi Box	<b>SATK</b>	Slow Attack
<b>CHO</b>	Chorus	<b>ENH</b>	Enhancer	<b>NS</b>	Noise Suppressor	<b>SP</b>	Speaker Simulator
<b>COMP</b>	Compressor	<b>EQ</b>	4-Band Equalizer	<b>OCT</b>	Octave	<b>TRM</b>	Tremolo/Pan
<b>COMP/LIM</b>	COSM Comp/Limiter	<b>FL</b>	Flanger	<b>PH</b>	Phaser	<b>VT</b>	Voice Transformer
<b>DES</b>	De-esser	<b>FV</b>	Foot Volume	<b>PS</b>	Pitch Shifter	<b>WAH</b>	Wah

## INSERT EFFECT ALGORITHMS

BANK	ALGORITHM	EFFECTS	BANK	ALGORITHM	EFFECTS
<b>GUITAR/BASS</b>	COSM GTR AMP	COMP, PAMP, SP, EQ/WAH, NS, FV, FL/CHO/PH/PS/HRM/DBL/TRM/SATK, DLY	<b>MIC</b>	VOICE TRANS	VT, NS, FV, FL/CHO/PH/PS/DBL/TRM, DLY
	ACOUSTIC SIM	ASIM, COMP, EQ, NS, FV, FL/CHO/PH/PS/DBL/TRM, DLY		COSM COMP VCL	COMP/LIM, DES, ENH, EQ, NS, FV, DLY
	BASS SIM	BSIM, COMP/DEF, NS, FV, FL/CHO/PH/PS/DBL/TRM	<b>LINE</b>	STEREO MULTI	COMP, RNG, EQ/WAH, NS, FV, FL/CHO/PH/PS/DBL/TRM, DLY
	COSM COMP GTR	COMP/LIM, PAMP, SP, EQ/WAH, NS, FV, DLY		LO-FI BOX	LO-FI, NS
	GTR SYNTH	GSYN, FV, FL/CHO/PH/PS/DBL/TRM, DLY	<b>SIMUL</b>	VO+GT AMP (MIC)	COMP, EQ, NS, DLY
	ACOUSTIC GTR	ACP, COMP, EQ, NS, DLY		VO+GT AMP (GUITAR)	COMP, PAMP, SP, NS, DLY
	BASS MULTI	COMP/DEF, OCT, ENH, EQ/WAH, NS, FV, FL/CHO/PH/PS/DBL/TRM, DLY		VO+AC.SIM (MIC)	COMP, EQ, NS, DLY
	COSM BASS AMP	COMP, PAMP, SP, EQ/WAH, NS, FV, FL/CHO/PH/PS/DBL/TRM, DLY		VO+AC.SIM (GUITAR)	ASIM, COMP, NS, DLY
COSM COMP BSS	COMP/LIM, PAMP, SP, EQ/WAH, NS, FV, DLY	VO+ACOUSTIC (MIC)		COMP, NS	
		VO+ACOUSTIC (GUITAR)		ACP, COMP, NS	
<b>MIC</b>	VOCAL MULTI	COMP, DES, ENH, EQ, NS, FV, FL/CHO/PH/PS/DBL/TRM, DLY			

## SPECIFICATIONS

**Track 8** ● **V-Track** 64 (8 V-tracks per each track) ● **Useful Capacity** CompactFlash: 32 MB - 1 GB ● **Data Type** HiFi (MT2), STANDARD (LV1), LONG (LV2) ● **Sample Rate** 44.1 kHz ● **Nominal Input Level** GUITAR/BASS -24 dBu, MIC (TRS balanced/XLR) -44 dBu, LINE -16 dBu ● **Input Impedance** GUITAR/BASS 1 M $\Omega$ , MIC (TRS balanced/XLR) 8.9 k $\Omega$  (HOT-COLD)/ 8.2 k $\Omega$  (HOT-GND, COLD-GND), LINE 15 k $\Omega$  ● **Nominal Output Level** LINE OUT -10 dBu ● **Output Impedance** LINE OUT 2 k $\Omega$ , HEADPHONES 147  $\Omega$  ● **Recommended Load Impedance** LINE OUT: 20 k $\Omega$  or greater, HEADPHONES 8-50  $\Omega$  ● **Residual Noise Level** LINE OUT: -85 dBu or less (INPUT SELECT: GUITAR/BASS, input terminated with 1 k $\Omega$ , INPUT SENS: CENTER, IHF-A, typ., EFFECT: OFF) ● **Interface** USB connector, DIGITAL OUT (optical type) ● **Connectors** GUITAR/BASS, MIC, LINE IN, LINE OUT, FOOT SW/ EXP Pedal, HEADPHONES, MIDI OUT ● **Power Supply** DC 9 V; AC Adaptor (PSA Series), Dry batteries x 6 ● **Current Draw** 200 mA ● **Dimensions** 322(W) x 225(D) x 69(H) mm, 12-11/16(W) x 8-7/8(D) x 2-3/4(H) inches ● **Weight** 1.65 kg, 3 lbs. 11 oz. (excluding batteries) ● **Accessories** Dry battery (R6 (AA) type) x 6, Owner's Manual, Demo Card (128 MB)

### BR-864 RECORDING TIME

	32 MB	64 MB	256 MB	1 GB
<b>HiFi (MT2)</b>	16 min.	32 min.	130 min.	520 min.
<b>Standard (LV1)</b>	19 min.	39 min.	156 min.	624 min.
<b>Long (LV2)</b>	24 min.	49 min.	196 min.	784 min.

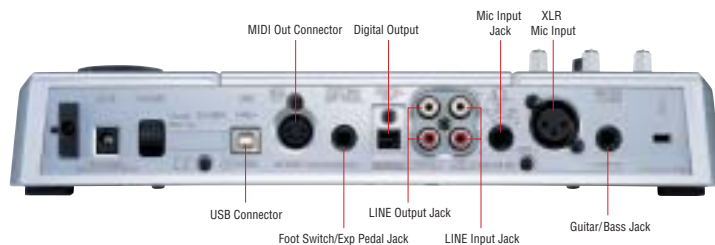
\*The recording times shown above are approximate. Times may vary depending on the number of songs created.  
 \*Recording times shown are the total for all tracks used. Therefore, if each of the eight tracks contain an equal amount of data, the length of the resulting song will be approximately 1/8 of the time shown.

\*The specifications are subject to change without notice.

### System Requirements (USB Connection)

**Compatible OS** Windows: Windows® Me/2000 or later, Macintosh: Mac OS 9.1 or later ● **Computer** Windows: Windows-compatible personal computer equipped with a USB port, Macintosh: Apple Macintosh computer equipped with a USB port  
**Driver** The BR-864 uses a standard DRIVER that is found on the OS. The DRIVER will be installed automatically once connected with Computer via USB.

## REAR PANEL



## OPTIONS



## A Complete Digital Studio that Burns CDs.

The BR-1180CD Digital Recording Studio is the ideal solution for musicians who need BOSS-style recording with onboard CD-burning capabilities. This 10-track digital studio features 80 Virtual Tracks, onboard COSM effects, a programmable Rhythm Guide drum track and a built-in CD-RW drive—all with the ease of use you've come to expect from BOSS digital studios.

## BR-1180CD DIGITAL RECORDING STUDIO

Same great features, but without the CD-R/RW drive.

### BR-1180 DIGITAL RECORDING STUDIO



CDI-BR-1 CD-R/RW Drive for BR-1180



Once a musical instrument generates sound vibrations, it reaches the human ear through various mediating objects, each of which significantly affects the sound. The material and configuration of the instrument, the electric/electronic/magnetic amplifying system, the air and the reverberation of the room all affect the final sound. Sound modeling, the latest DSP technology, "virtually"reconstructs these objects. Roland's breakthrough Composite Object Sound Modeling (COSM) uses the advantages of multiple modeling methods and succeeds in accurately emulating existing sounds, as well as producing sounds that have never before been created.